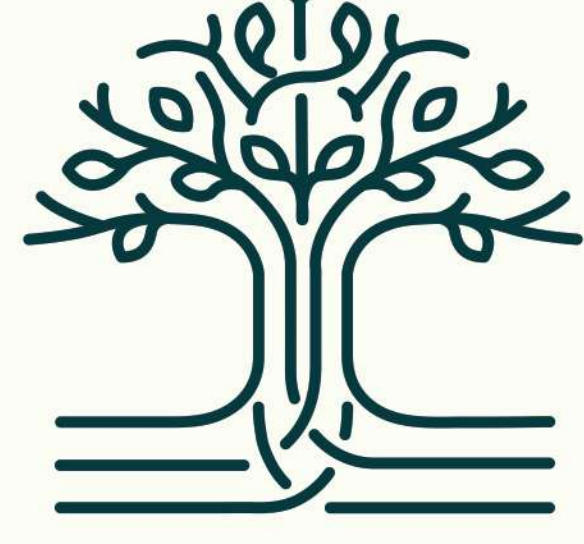




द चौपाल



प्रेरणा

चौपाल म्हणजेच गावातील आपली चावडी. प्राचीन भारतीय जीवनपद्धती व ग्राम व्यवस्थेत चौपाल मध्यवर्ती ठिकाण असायचे. ह्या ठिकाणी संपूर्ण गाव एकत्रित होत असे. अर्थकारण , समाजकारण, राजकारण, व्यक्तिगत संबंध इ. सर्व विषयांवरच्या विचारांची देवाणघेवाण ह्या विशाल वृक्षाच्या पारावर संपन्न व्हायची.

आजच्या आधुनिक वाणिज्य व्यवस्थेला पारंपारिक व्यवस्थेस जोडण्याचा हा अल्पसा प्रयत्न

Inspiration

Choupaal is traditionally a village meeting place, office, or court, serving as a public assembly for the villagers. It is usually located at the centre of the village, under a tree on a high-raised platform and is used as a place of gathering and discussion.

This is a small effort to connect traditional wisdom with modern trade and commerce.





द चौपाल

Share & Grow

संकल्पना

The concept of coming together to share knowledge, experience and insight for the benefit of people and the community has remained constant over time.

This project is conceptualised on four pillars: staying connected to the core, meeting customer needs, redefining supply and demand, and, most importantly, fostering trust between all stakeholders.

The Address

Unbeatable Location
Unique Elevation

The Choupaal is the first of its kind, combining versatility, luxury, and lifestyle to create an unparalleled experience. As the city continues to grow and expand, this business hub is a need of the hour.



Recreating iconic history
for an inspiring future.



Exterior View

स्वागत

The luxurious lobby creates an awe-inspiring atmosphere, making it the perfect entrance.

The majestic grand foyer is inspired by the enormous banyan tree, a symbol of strength and longevity. With a width of 36 feet and triple height, entering this space is an experience.



| Entrance Lobby



5-star experience at the Atrium.

Stepping into opulence and splendor.

The spectacular atrium is the ideal portal to The Choupaal. The grandeur and beauty of the 10,000-square-foot space have been captured, creating a timeless space of elegance.



| Glass Elevator

Amenities

All your needs under one roof

- 01

Corporate Lifestyle

12 feet floor height

Each floor has a 3 metre wide lobby

Fiber optic connection to each individual unit

Conference room for 20-25 people

Well-equipped elevators

Vastu compliant
- 02

Maintenance

Impeccably maintained by BMS

Front reception & help desk

100% power backup for lifts and common areas

Individual toilets in each unit

Common toilets on each floor
- 03

Parking

Allotted parking & ample visitor parking

Lifts from the parking lot

Electric charging stations
- 04

Eco-friendly

Solar power generation for common lighting and lifts

Rainwater harvesting

Environment clearance
- 05

Security & Safety

24x7 CCTV surveillance

24 hours of security

Disabled friendly building
- 06

Recreational

Indoor games

Indoor cafeteria

Green gym & rooftop walkway

Sky lounge & view points

Amphitheater & oxygen garden

Taste the affluent retail experience.

Showrooms starting from
500 sq.ft. to 2000 sq.ft.



Nurturing corporate culture.

The Choupaal provides a collaborative environment for teams to come together and share their knowledge and expertise.



| Conference Room

**Bigger,
Brighter,
Smarter,
Sustainable.**



With smartly sized office spaces and the perfect combination of modern amenities at a strategic location, The Choupaal is an ideal choice for businesses to reach new heights.



"Inspiration is like lightning, you never know when it will strike"

Thrive in an interactive space.

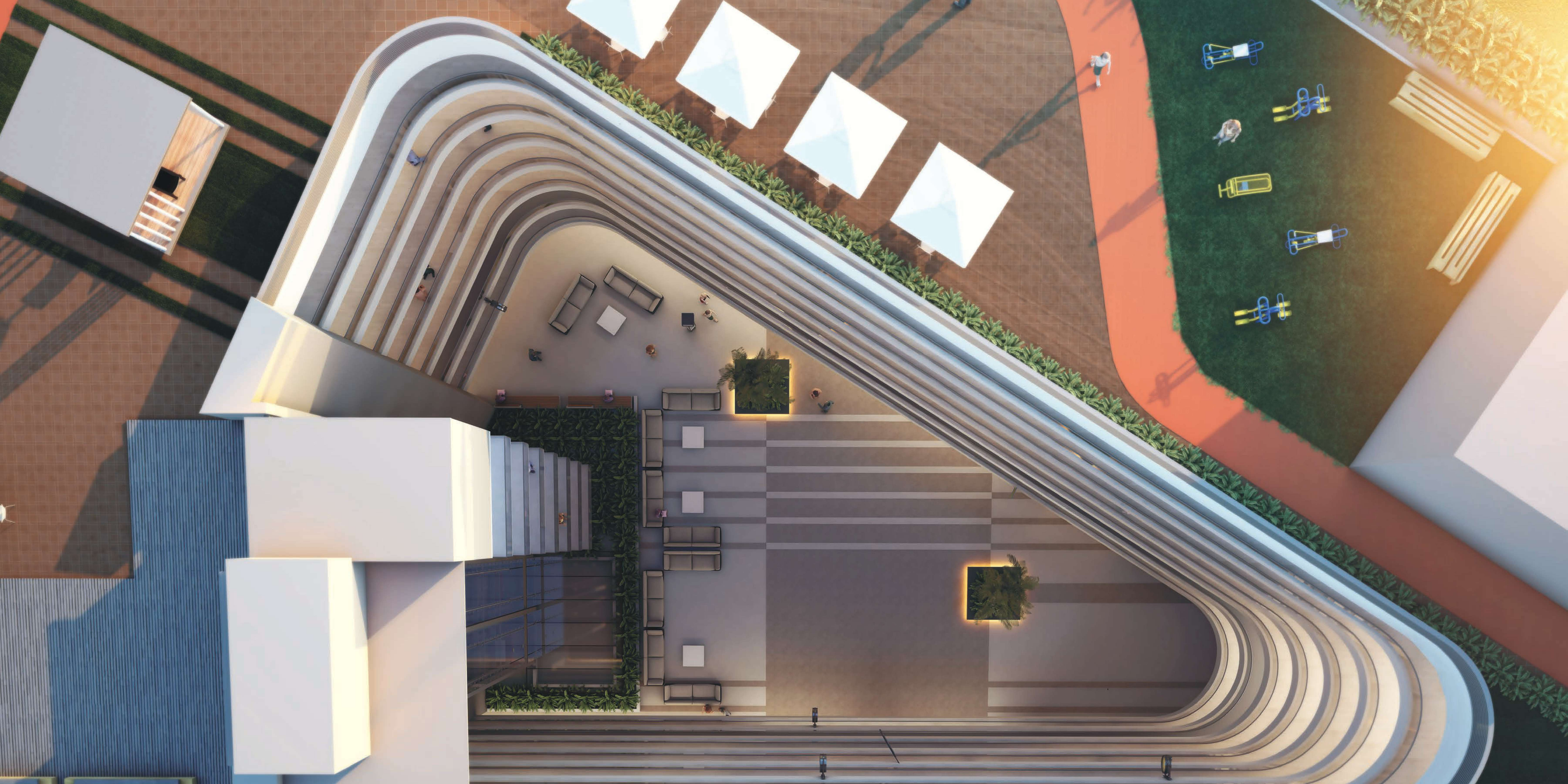
Multiple fun breakout areas will encourage everyone to have a quality time at work. Indulge your clients, employees or yourself with a cup of coffee at the pleasant cafeteria.



**Perfect
blend of
Work & Play**

*Achieve the
work-life balance*

Creativity flows with the right atmosphere and The Choupaal aims to provide the same.



Unwind, Rejuvenate, Refocus

Enjoy the walkway, fresh air, sunshine and exercise.



Enjoy a refreshing drink or a quick snack while taking in the stunning views of the cityscape. With its chic and modern decor, it is the perfect place to relax and unwind after a long day at work.

Breathing Cosmos.

Take a break and recharge.

20,000 sq. ft. Amphitheater, Calming Atmosphere, Jogging Track, Lush Greenery, Oxygen Garden.





Business hub at the centre of Nashik

Being at the centre, the Choupaal is accessible to all the main roads and points in the city. Its strategic placement makes it a premium business hub.

Connectivity to the country's leading cities



By Road

Road connections to Samruddhi Mahamarg, the Surat-Chennai Expressway, NH3 to Mumbai, and the upcoming Nashik-Pune Corridor are excellent.



By Air

Nashik Airport, Ozar
Shirdi Airport, Shirdi

Connectivity to major cities like: Mumbai, Pune, Delhi, Bengaluru, Goa, Chennai, Nagpur, Ahemdabad, Hyderabad, Indore, Chandigarh.

Points of Interest

0.8 km from Mumbai Naka (the main entrance to the city), the Income Tax and Excise Office

2 km to 2.5 km from the District court, Collectors office, Nashik Municipal Corporation & Central Bus Station

0.5 km from Golf Club & Circuit House

0.3 km from upcoming Metro station

0.1 km from The SSK Solitaire Hotel and Banquets

2.2 km from Courtyard by Marriott Nashik

6.0 km from The Gateway Hotel

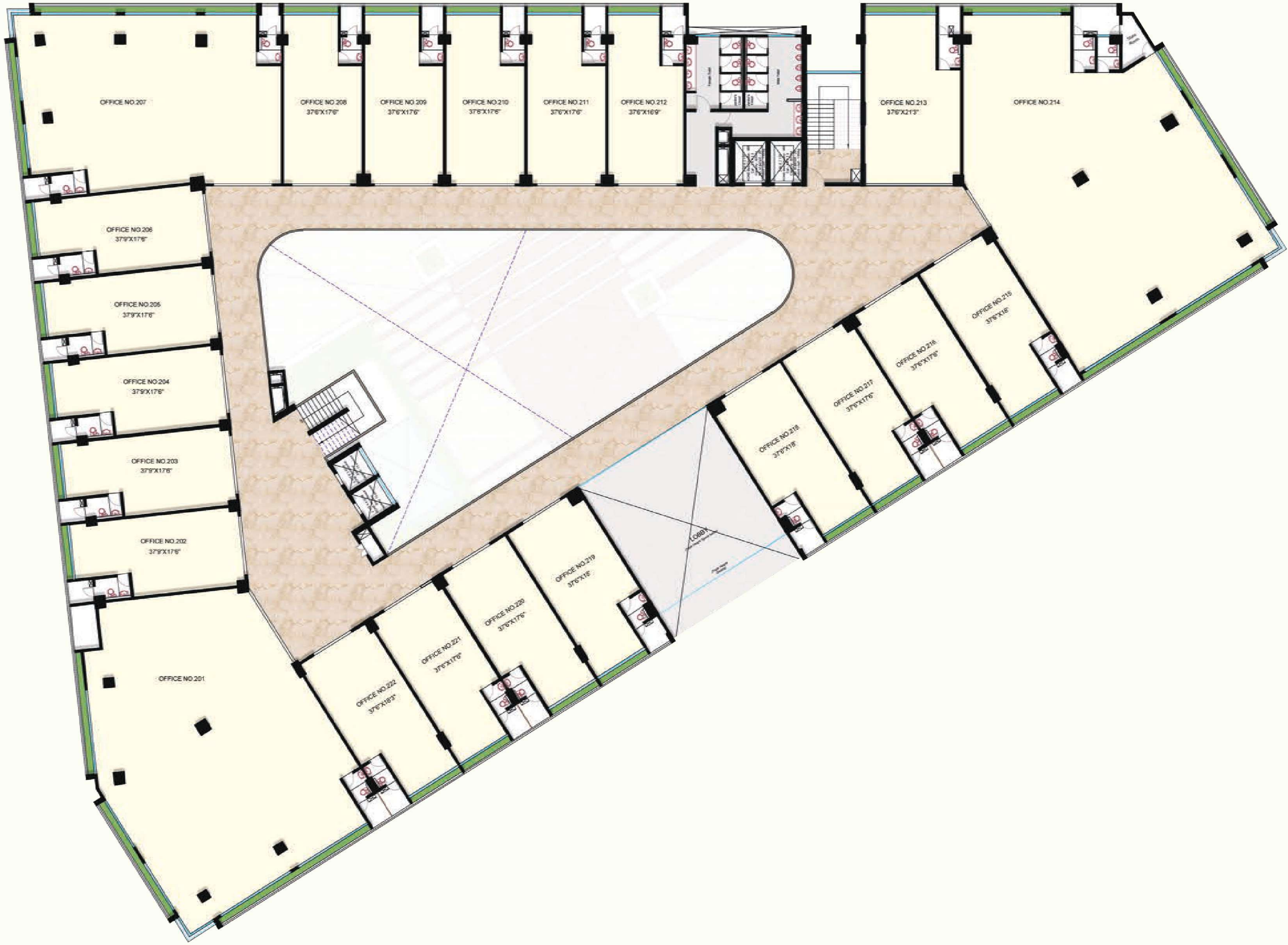
7.0 km from Radisson Blu Hotel & Spa



Master Plan
Ground Floor



First Floor



Second Floor





Ar. Sanjay Patil, Nashik

Ar. Sanjay Patil is the principal architect of this project. After graduating from the prestigious Sir J.J. College of Architecture, he established the firm "Environ Planners" in 1981. Over the last 40 years, Environ Planners has undertaken a wide array of projects, spanning residential, commercial, industrial, educational, institutional and beautified them with his immaculate interior design.

With climate change looming large over us, the building designs are sustainable and energy efficient. At the heart of their creations lies the firm belief that when innovative technology meets deep-rooted traditions and generational wisdom, extraordinary spaces are created.

Team

द चौपाल

Consultant

| | | | |
|----------------|---|-----------------|-----------------------------------|
| Landscape | Origin Architect, Nashik | Contractor | Shrinath Constructions, Nashik |
| Plumbing / STP | Amit Infrastructure Consultant, Pune | Bankers | The Saraswat Co. Op. Bank, Nashik |
| Electrical | Siddhivinayak Electrical Consultant, Pune | Visuals | Ar. Jayesh Patel, Nashik |
| HVAC-LV | Refrisyntn Engineers Pvt. Ltd., Pune | Design Creative | Plums & Peaches Design, Nashik |
| RCC | M/S G.A. Bhilare Consultant Pvt. Ltd., Pune | | |
| Environment | Vertex Enviro Consultant Pvt. Ltd., Pune | | |

Thank you Nashik !

We are proud of Nashik. It has given us ample opportunities to grow and establish ourselves economically, culturally and socially.

"The Choupaal" is our flagship project. We wish to develop it, not merely as an economic venture but as a value addition to the rich identity of our city.

Our Vision is to develop, cultivate and nurture a thriving business community in the growing city of Nashik, focusing on progressive culture for all stakeholders.

Our Mission is to provide an eco-friendly, well-connected, customised commercial space with premium quality materials, thoughtfully designed areas and unwinding facilities for utmost customer satisfaction.

- Rameshwar Badrinarayan Kalantri

- Ashok Bankatlal Bang

A Project by:



Call for Enquiry : +91 7030622622



Share and grow